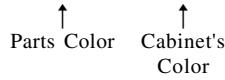


## SECTION 8 REPAIR PARTS LIST

### 8-1. EXPLODED VIEWS

**NOTE:**

- -XX and -X mean standardized parts, so they may have some difference from the original one.
- Items marked "\*" are not stocked since they are seldom required for routine service. Some delay should be anticipated when ordering these items.
- The mechanical parts with no reference number in the exploded views are not supplied.
- Color Indication of Appearance Parts  
Example:  
KNOB, BALANCE (WHITE) . . . (RED)



• Abbreviation

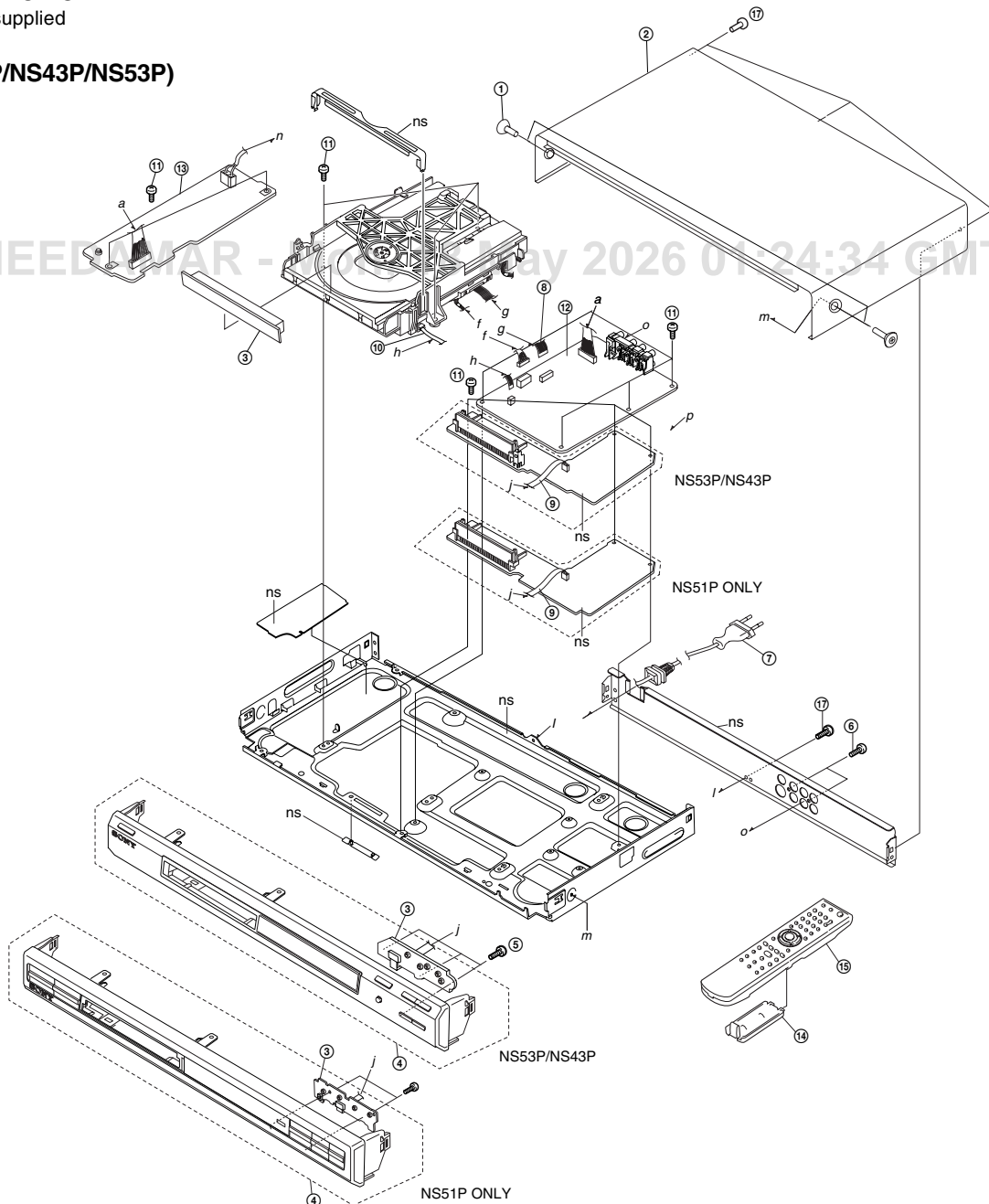
- |                          |                         |
|--------------------------|-------------------------|
| AEP : AEP Model          | TH : Thailand Model     |
| AR : Argentina Model     | ME2 : Middle East Model |
| AUS : Australia/NZ Model | ME5 : PAK,MAR Model     |
| BR : Brazilian Model     | MX : Mexican Model      |
| CH : Chinese Model       | MY : Malaysian Model    |
| E : Latin America Model  | RUS : Russian Model     |
| EA : Saudi Arabia Model  | SP : Singapore Model    |
| HK : Hong Kong Model     | TW : Taiwan Model       |
| IN : India Model         | UK : UK Model           |
| IR : Iran Model          | VN : Vietnam Model      |
| KR : Korean Model        |                         |

The components identified by mark  $\Delta$  or dotted line with mark  $\Delta$  are critical for safety. Replace only with part number specified.

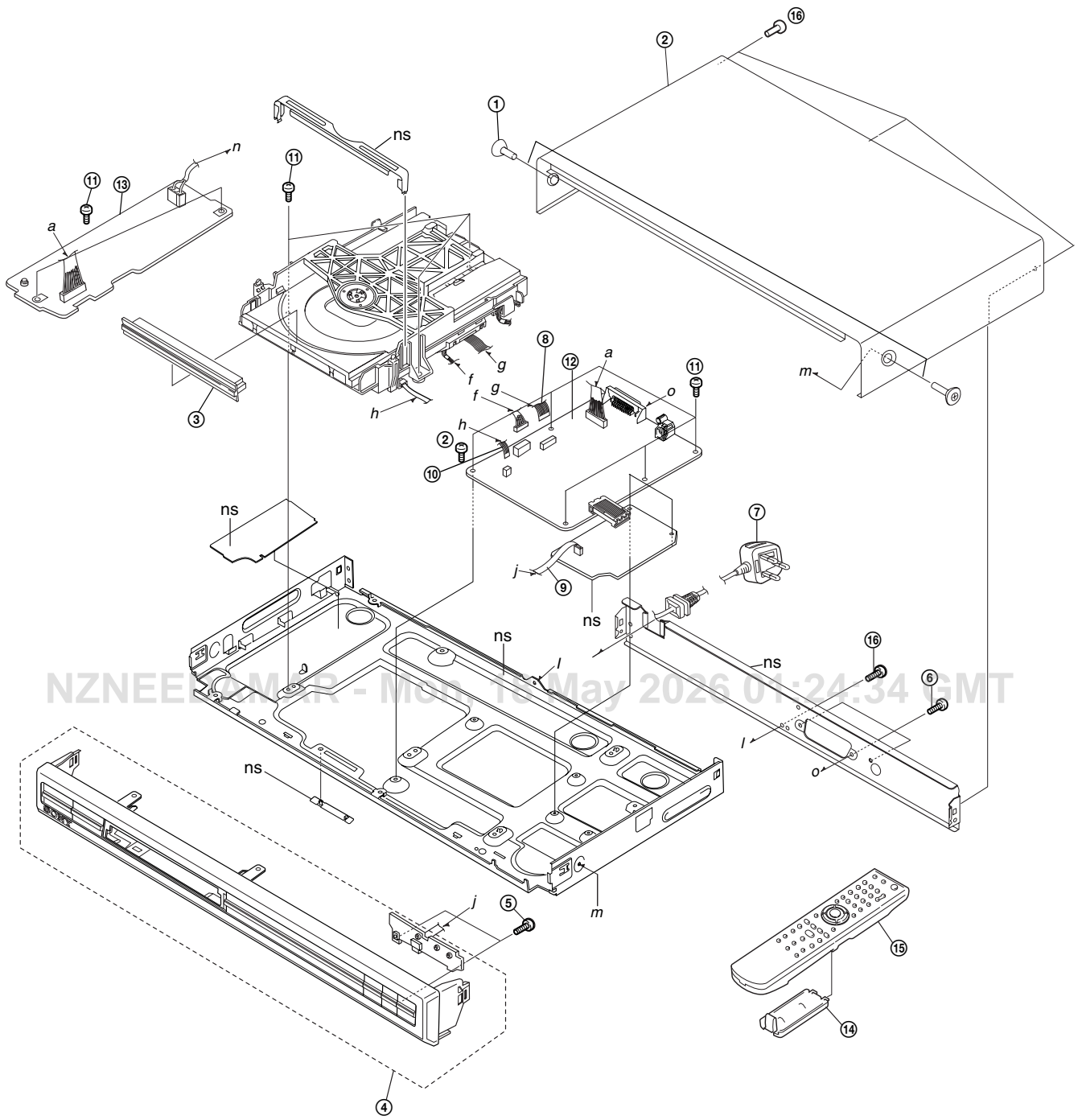
#### 8-1-1. MAIN SECTION

ns : not supplied

#### a). (NS51P/NS43P/NS53P)

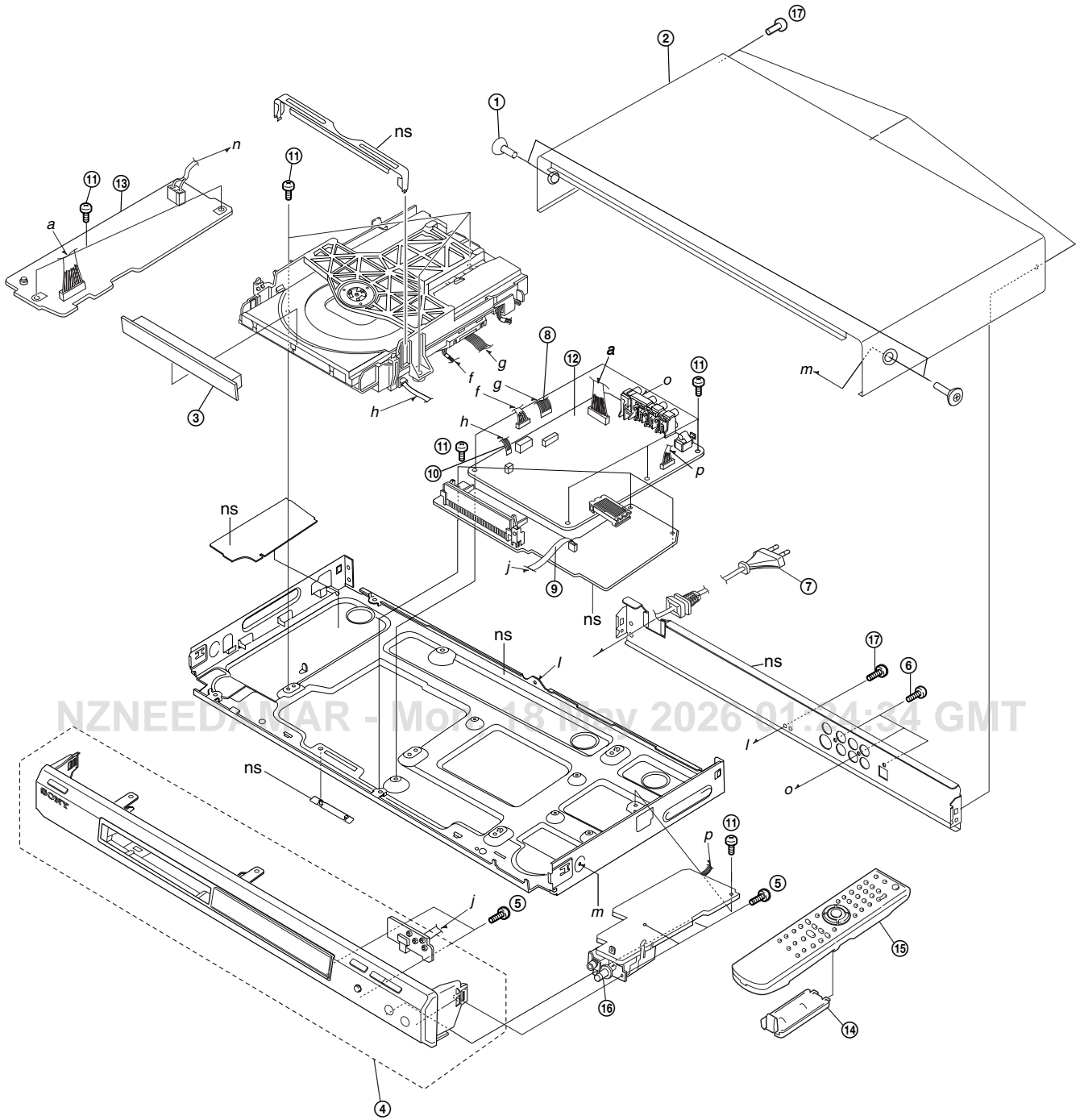


(NS15)



# DVP-NS15/NS51P/NS43P/NS53P/K56P

(K56P)



### 8-1-2. MECHANISM DECK ASSEMBLY

ns : not supplied

